

About Us

We are part of **local charity** the



West Somerset Food Cupboard

based at the Church of St. Michael the Archangel in Alcombe, Minehead, which has been **collecting and distributing emergency food across West Somerset since 2007.**

In 2022 we established the Minehead Area Local Pantry working in partnership with food re-distribution charity FareShare South West, Somerset Council's (formally Somerset West and Taunton Council) Local Pantry Scheme and supermarkets, as well as local shops, growers and community groups ever since.



Our aim is to **make surplus, good quality, fresh, chilled and non-perishable food**, that would otherwise have gone to waste, **available to our members for minimum cost.**

How Can You Benefit As A Member?

- ✓ Each week, for up to six months, you will receive **fresh food**, which can include **fruit, vegetables, dairy, meat** and more – all stored to the highest quality standards, as well as **non-perishable store cupboard food** items.
- ✓ Supplies will **vary** according to what is available **each week.**
- ✓ You'll receive at least **15 items of food** for a membership payment of **just £4 per week** which can be paid in cash or by contactless payment.
- ✓ You will **receive a free chiller and tote bag** to transport your food safely home.
- ✓ You'll be helping to **reduce food waste and landfill.**
- ✓ As a member of the Minehead Area Local Pantry, you become part of a network of community Local Pantries, **run by friendly volunteers, who will be happy to help** when you collect your food.

What Do You Need To Do To Become A Member?

- ✓ Read and agree to **our Terms and Conditions.**
- ✓ **Confirm that you live within 15 minutes travel time of Alcombe.**
- ✓ **Complete a membership application form** either via the QR code, by email or by post (see details on back page).
- ✓ **Turn up weekly on a Tuesday afternoon** to collect your food and let us know in advance if you are not going to be able to make it.
- ✓ **Transport your food safely home within 15 minutes in the chiller bag** that we'll supply and bring it back each week to be re-filled (there will be a charge for replacements).
- ✓ Cook up some **tasty, healthy meals throughout the week – all for £4!**
- ✓ **Membership places are limited** so please do let us know if/when you want to cancel yours.

Want To Help?

We would love to hear from you if:

- ✓ You are a **business or group in the Minehead Area** who has surplus food that would otherwise go to waste.
- ✓ You want to **find out about volunteering opportunities** at the West Somerset Food Cupboard.
- ✓ You represent an **organisation** whose **clients might benefit from any of the services** that we provide.

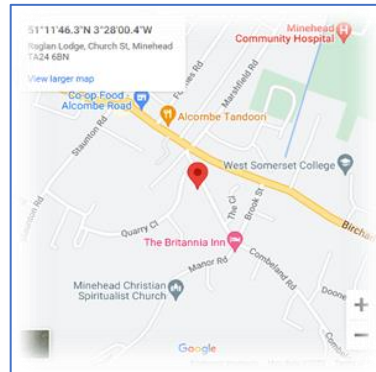


We are very grateful to be supported by **FareShare South West**, as well as many generous **local donors, growers and producers**.



When and Where Is The Local Pantry?

- **Every Tuesday afternoon**
- **At the Church of St. Michael the Archangel, Church St, Alcombe TA24 6BN**



How To Join The Local Pantry



Scan the QR code to read the Terms and Conditions, and submit an Application Form

Alternatively, request email or paper version using the contact details below.

Email: info@wsfoodcupboard.org.uk

Phone: 07398 613720

©2022 West Somerset Food Cupboard. All Rights Reserved.
Charity Number: 1198591

The local
PANTRY 

Minehead area

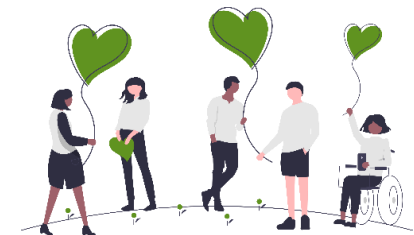
**Low Cost
Surplus Food**

Giving our community access to fresh, chilled and nutritious food at minimum cost while fighting food waste.



A membership scheme which costs just £4 a week.

In return you receive a mix of fresh, chilled, and non-perishable food worth around £20.



www.wsfoodcupboard.org.uk